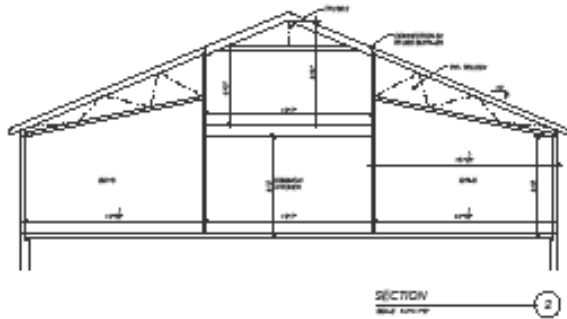


# CAMP CAPELLA EXPANSION PROJECT PROPOSED CABIN DESIGN & SITE PLAN



PRELIMINARY

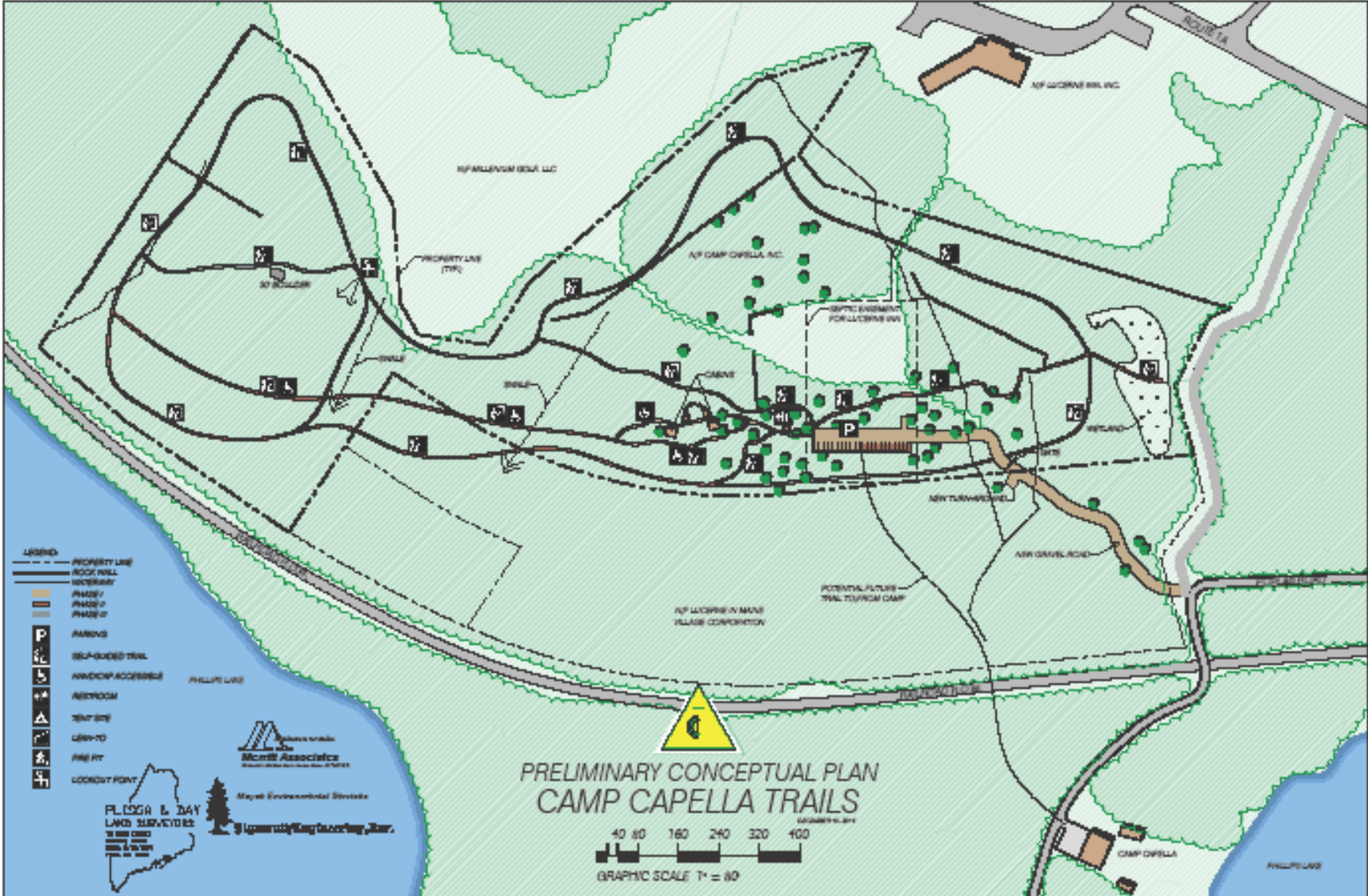
Camp Capella  
Capella Trails  
8 Pearl Point Road, Dedham, Maine

Cabin Plans



Drawn: [blank]  
Checked: [blank]  
Date: 11/20/19  
Project No: 21071

A1



- LEGEND**
- — — — — PROPERTY LINE
  - — — — — ROCK WALL
  - — — — — BOUNDARY
  - — — — — PHASE I
  - — — — — PHASE II
  - — — — — PHASE III
  - P PARKING
  - A PICNIC SHELTER
  - R RESTROOM
  - H HOOKUP
  - LOOKOUT POINT
  - WANDIC ACCESSIBLE
  - WANDIC ACCESSIBLE

**FLEISSER & DAY**  
LAND SURVEYORS

**Mount Association**  
Mount Association

**Mayall Environmental Services**  
Mayall Environmental Services

**Community Engineering, Inc.**  
Community Engineering, Inc.

**PRELIMINARY CONCEPTUAL PLAN**  
**CAMP CAPELLA TRAILS**

40 80 160 240 320 400

GRAPHIC SCALE 1" = 80'